

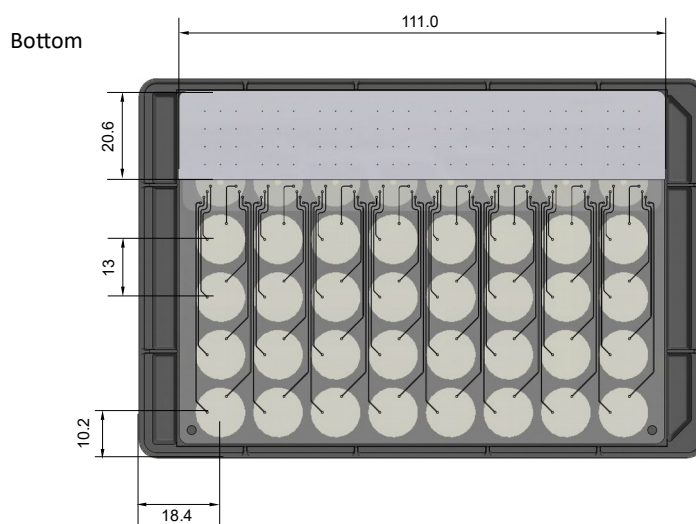
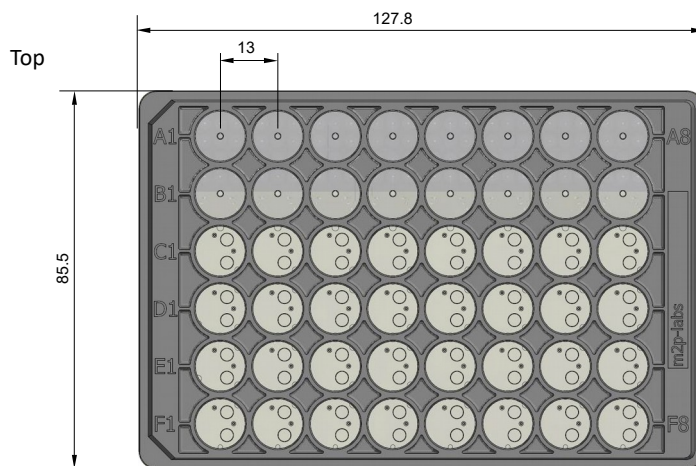
Microfluidic Round Well Plate (48 well MTP, round well) MTP-RMF32-XXXX

Flat microfluidic bottom, round well, high-purity polystyrene

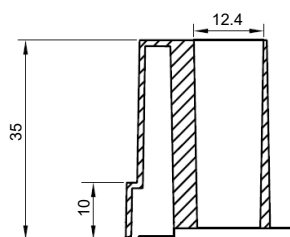
Technical parameters

Specification	Description
Type	<ul style="list-style-type: none"> - High-purity polystyrene microplate - 48 round wells: <ul style="list-style-type: none"> 16 reservoir wells, 32 cultivation wells - Transparent microfluidic polystyrene flat bottom - Free of heavy metal
Dimension (standard SBS/SLAS footprint)	<ul style="list-style-type: none"> - Length: 127.8 mm - Width: 85.5 mm - Height: 35 mm - Cavity depth: 33 mm
Volume / well	<ul style="list-style-type: none"> - Total well volume: 3200 μL - Working volumes: refer to next page - Note: Maximum filling volumes may vary with altered characteristics of fermentation broth
Microfluidic features	<ul style="list-style-type: none"> - Pump stroke volume: ca. 120 nL (H_2O, depending on media) - Maximum pump rate per well: ca. 80 $\mu\text{L/h}$ (665 pump strokes per hour)
Technical data (performance)	<ul style="list-style-type: none"> - Refer to next page for detailed data on OTR within recommended conditions - Approx. range of OTR: 5 – 25 mmol/L/h - Approx. range of k_{La}: 30 – 160 h^{-1} - Effective mixing: flower shape acts similar like baffles - No optical cross talk from well to well (black plate corpus) - Range of operation temperature: -20 – 60 $^{\circ}\text{C}$
Measurement options	<ul style="list-style-type: none"> - Biomass (via scattered light) - Fluorescence (intensity measurement) - pH value with pre-calibrated optodes - DO (dissolved oxygen) with pre-calibrated optodes
Sterilization	<ul style="list-style-type: none"> - 20 kGy (β-radiation) - Sterile packed (single plate)
Other information	<ul style="list-style-type: none"> - Sedimentation of biomass may occur at shaking frequencies lower than 600 rpm ^{*1} - Autoclavability: no - For single use only - Centrifugation: max. 4000 x g (with swinging-bucket rotor for microplates)

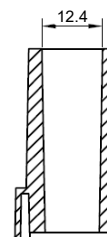
MTP geometry for automation purpose [mm]



Section (length)



Section (width)



© 2018 m2p-labs GmbH, Germany, all rights reserved.

HEADQUARTERS EUROPE
m2p-labs GmbH
Arnold-Sommerfeld-Ring 2
52499 Baesweiler
Germany

USA / CANADA
m2p-labs, Inc.
400 Oser Ave, Suite 1650
Hauppauge, NY 11788
USA

ASIA PACIFIC
m2p-labs Limited
Unit 117, Biotech Centre 2
HKSTP
Shatin, NT, Hong Kong

Tel.: +49 - 2401 805 330
Fax: +49 - 2401 805 33
info@m2p-labs.com

Phone: +1 631 501 1878
Fax: +1 631 501 1060
infoUS@m2p-labs.com

Phone: +852 6092 6778
Fax: +852 3594 6381
infoAsia@m2p-labs.com

OTR: Oxygen transfer rate [mmol/L/h]
 k_{La} : Volumetric oxygen transfer coefficient [h^{-1}]
^{*1}: Shaking diameter 3 mm (measured in BioLector®)

Microfluidic Round Well Plate (48 well MTP, round well) MTP-RMF32-XXXX

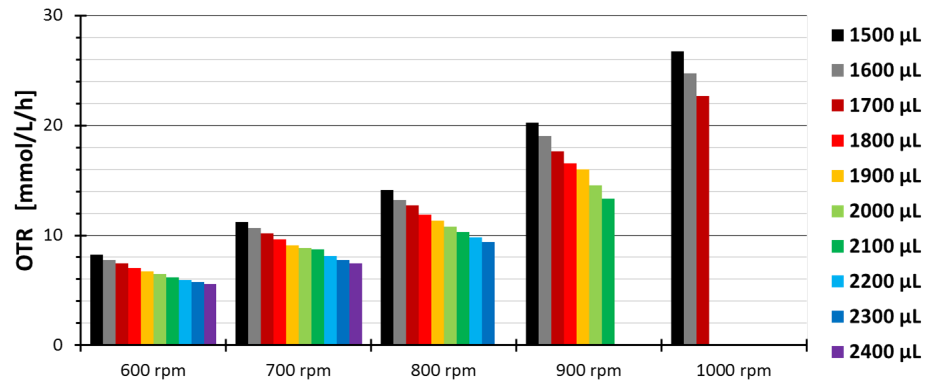
Flat microfluidic bottom, round well, high-purity polystyrene

Operating conditions in Microfluidic Round Well Plates

Working volumes *2

Shaking frequency	Max. filling volume *4 A + B	Max. filling volume *4 C - F	Min. filling volume
600 rpm	2000 µL	2400 µL	1000 µL
700 rpm	2000 µL	2400 µL	1000 µL
800 rpm	2000 µL	2300 µL	1000 µL
900 rpm	2000 µL	2100 µL	1000 µL
1000 rpm	2000 µL	1700 µL	1000 µL

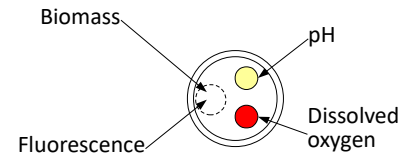
Oxygen transfer rates for the recommended conditions *2 *3



Optode (optical sensor spots) parameters

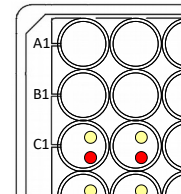
Dissolved oxygen measurement	MTP-RMF32-BOH1	MTP-RMF32-BOH2	MTP-RMF32-BOH3
Measurement range	0 – 100 % O ₂ (air saturation)	0 – 100 % O ₂ (air saturation)	0 – 100 % O ₂ (air saturation)
Accuracy (depending on batch calibration)	± 5 % dissolved oxygen (DO)	± 5 % dissolved oxygen (DO)	± 5 % dissolved oxygen (DO)
Wavelength	ex.: 520 nm; em.: 600 nm	ex.: 625 nm; em.: 775 nm	ex.: 625 nm; em.: 775 nm
Response time (t90)	At 25 °C < 30 s	At 25 °C < 30 s	At 25 °C < 30 s
Temperature range	15 – 50 °C	10 – 40 °C	10 – 40 °C
Compatibility (useable with)	pH 1 – 14, CO ₂ , H ₂ S, SO ₂ , salinity	ethanol (≤ 5 % v/v), methanol (≤ 5 % v/v)	ethanol (≤ 5 % v/v), methanol (≤ 5 % v/v)
Cross sensitivity to	Organic solvents (acetone, chloroform, ...)	Organic solvents (acetone, chloroform, ...)	Organic solvents (acetone, chloroform, ...)

Measuring position for



Configuration of optodes

MTP-RMF32-BOHX



pH measurement	MTP-RMF32-BOH1	MTP-RMF32-BOH2	MTP-RMF32-BOH3
Measurement range	4.5 – 7.5 pH	4.5 – 7.0 pH	4.0 – 6.0 pH
Accuracy (depending on batch calibration)	at pH = 7: ± 0.1 pH	at pH = 7: ± 0.1 pH	at pH = 5: ± 0.1 pH
Wavelength	ex.: 470 nm; em.: 525 nm	ex.: 508 nm; em.: 550 nm	ex.: 625 nm; em.: 750 nm
Response time (t90)	At 25 °C < 30 s	At 25 °C < 30 s	At 25 °C < 30 s
Temperature range	15 – 50 °C	15 – 50 °C	15 – 50 °C
Compatibility (useable with)	Aqu. solutions, ethanol (≤ 5 % v/v), methanol (≤ 5 % v/v)	Aqu. solutions, ethanol (≤ 5 % v/v), methanol (≤ 5 % v/v)	Aqu. solutions, ethanol (≤ 5 % v/v), methanol (≤ 5 % v/v)
Cross sensitivity	At red. ionic strength (< 100 mM); fluorescent metabolites in yellow/green wavelengths (GFP, Riboflavine, YFP)	At red. ionic strength (< 100 mM); fluorescent metabolites in yellow/green wavelengths (GFP, Riboflavine, YFP)	At reduced ionic strength (< 100 mM)

Solution	Recommended Concentration
Glucose, Fructose, Glycerin (≥ 25 °C)	max. 500 g/L
NaOH, KOH	3 M
Ammonia Solution	10 %
H ₃ PO ₄ , H ₂ SO ₄ , HCl	3 M
CH ₃ COOH	30 %

Available plate types

Art. No.	Description
MTP-RMF32-BOH1	Microfluidic Round Well Plate (48 well MTP) incl. HP8/PS13 pH/DO optode/cultivation well
MTP-RMF32-BOH2	Microfluidic Round Well Plate (48 well MTP) incl. LG1/RF pH/DO optode/cultivation well
MTP-RMF32-BOH3	Microfluidic Round Well Plate (48 well MTP) incl. pH51/RF pH/DO optode/cultivation well
BOH1/2/3	BOH1: HP8/PS13 (ID 202/203); BOH2: LG1/RF (ID 221/228); BOH3: pH51/RF (ID 424/228)

- *2: Measured in BioLector®Pro (shaking diameter 3.0 mm, 25 °C, humidity off, horizontal alignment, test fluid: water with Coomassie Blue)
- *3: OTR determined with aqueous sulfite oxidation system (0.5 M)
- *4: Depending on the composition of the liquid medium, the maximum working volume at a defined shaking frequency may be less.

© 2018 m2p-labs GmbH, Germany, all rights reserved.

HEADQUARTERS EUROPE

m2p-labs GmbH
Arnold-Sommerfeld-Ring 2
52499 Baesweiler
Germany

Tel.: +49 - 2401 805 330
Fax: +49 - 2401 805 33
info@m2p-labs.com

USA / CANADA

m2p-labs, Inc.
400 Oser Ave, Suite 1650
Hauppauge, NY 11788
USA

Phone: +1 631 501 1878
Fax: +1 631 501 1060
infoUS@m2p-labs.com

ASIA PACIFIC

m2p-labs Limited
Unit 117, Biotech Centre 2
HKSTP
Shatin, NT, Hong Kong

Phone: +852 6092 6778
Fax: +852 3594 6381
infoAsia@m2p-labs.com

www.m2p-labs.com

INFORMATION contained in this document or drawing is proprietary to m2p-labs GmbH. This document may not be reproduced in the whole or in parts for any reason without written permission from m2p-labs GmbH. All rights of design, invention and copyright are reserved.